

C-Clamp Encoder

Versatile Waterproof Wheel Encoder



C-Clamp Encoder with phased array probe and wedge

The C-Clamp Encoder is a universal accessory for single axis inspections requiring no tools for setup and operation. The two clamping arms adjust up to 55mm separation to fit around a broad range of ultrasonic transducers and phased array wedges.

Benefits

- **Precise:** High resolution encoded scans for single axis applications
- **Versatile:** Fully adjustable for any transducer or wedge up to 55mm wide
- **Simple:** Economical solution that requires no tools to set up
- **Adjustable:** Spring loading guarantees encoder always stays in contact with inspection surface
- **Secure:** Strong clamp mechanism ensures no lateral movement of encoder when scanning
- **Waterproof:** Ideal for site conditions
- **Compact:** Design allows for use in areas with limited access
- Encoder is offset from the inspection area to reduce the risk of the wheel skidding on couplant
- Can be used with any instrumentation

The C-Clamp Encoder arms can be quickly adjusted to the transducer or wedge width and then locked and clamped with thumbscrews. The waterproof wheel encoder is then fitted either behind or alongside the clamp dependent upon the inspection needs. The encoder is spring loaded onto the surface with the spring tension adjustable via the attachment thumb screw.

This simple and versatile encoding device is ideal for single-axis manual phased array inspections including:

- Pipe and vessel welds
- Bolt hole crack detection
- Linear array corrosion mapping
- B and D-scans



Features

- Clamp width: Max opening 55mm
- Can be positioned at 0° & 90° (for B & D scans)
- Spring loaded waterproof wheel encoder. IP68 rated (immersion up to 1m)
- Encoder Resolution: 65.6 steps/mm
- Encoder wheel diameter: 39mm
- Termination options available for any manufacturers instrumentation



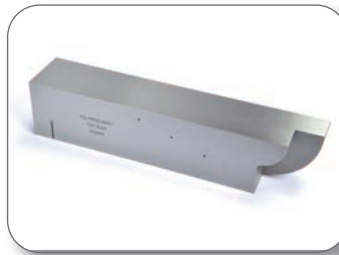
C-Clamp with rear mounted encoder and phased array probe and wedge



C-Clamp with side mounted encoder and phased array probe and wedge

Accessories

- Phoenix ISL range of phased array probes
- Range of phased array wedges
- Phased Array Calibration Block



Standard Kit

- Universal clamp system
- Encoder with 2.5m cable
- Protective Case

Order Information

Order code: **AE-ENCLMP**

