



## CYGNUS ROV MOUNTABLE ULTRASONIC THICKNESS GAUGE



Specifically designed for underwater remotely operated vehicles, Cygnus offers a dedicated ROV mountable thickness gauge, ROV MK5 UTG Kit (depth rated to 500 meters (1,640 ft)). This gauge is versatile and designed to measure metal thickness in the harshest subsea operating conditions - without the need to remove coatings.

IDEAL FOR  
USE IN



HULL UTM  
INSPECTION



CIVIL  
ENGINEERING

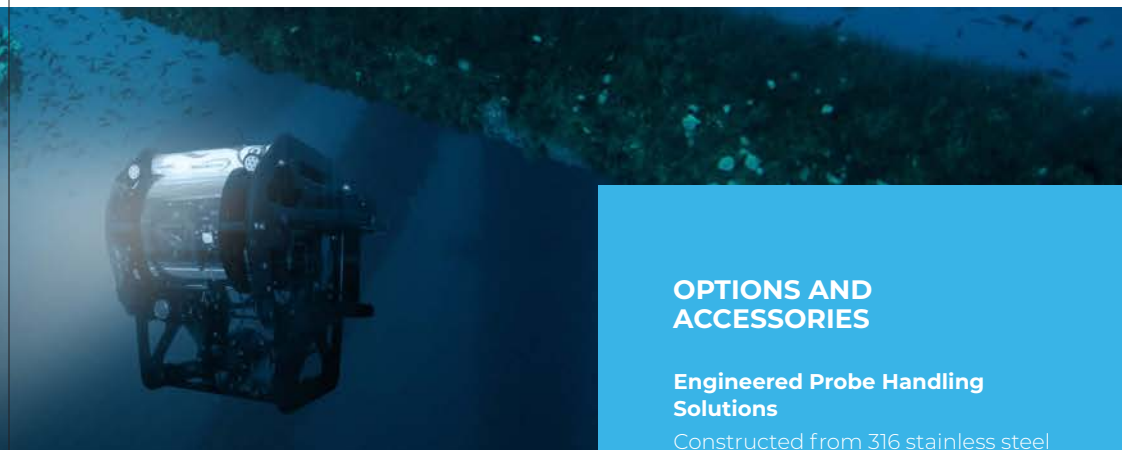


MARINE  
STRUCTURES



OFFSHORE  
PLATFORMS

...UWILD or IWS class surveys, subsea inspection, repair and maintenance (IRM) of infrastructure, underwater equipment



## CYGNUS ROV MOUNTABLE KEY FEATURES



- **Multiple-Echo mode for accurate, through-coat measurements as specified by Classification Societies**
- Supplied with CygLink software to display and process measurements on a computer at the surface
- Selectable Deep-Coat mode ignoring coatings up to 20mm (3/4") thick
- Fitted with a safety Pressure Relief Valve and Securing Eye
- Easy calibration at the surface via CygLink software or TopSide Repeater (TSR) unit
- Removable end plate for full serviceability
- Wet mateable 'MC' style underwater connectors.
- Optional Topside Repeater (TSR) unit allowing readings to be displayed remotely and superimposed onto ROV's camera screen
- Optional purpose-built ROV probe handlers for optimal alignment



**DEPTH RATED**  
TO 500 METERS  
(1,640 FT)



**CYGLINK**  
**SOFTWARE**



**TOPSIDE**  
**REPEATER**  
OPTION



**WET-MATEABLE**  
UNDERWATER  
CONNECTORS



**GO TO**  
**PRODUCT**  
**PAGE**

Visit [www.cygnus-instruments.com](http://www.cygnus-instruments.com) to explore our full product range

## OPTIONS AND ACCESSORIES

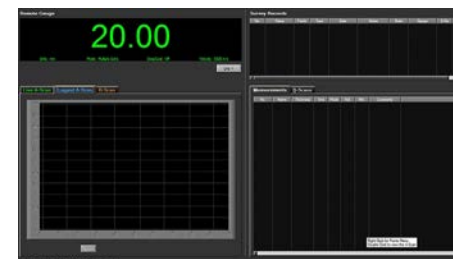
### Engineered Probe Handling Solutions

Constructed from 316 stainless steel throughout, the W1 probe handler can be held by a manipulator arm and is ideal for use on Work Class ROVs. The Cygnus S1 and G1 Probe Handlers are developed for use on inspection, observation or light work-class ROVs.



### Cyglink Computer Software

CygLink is a Windows® application that allows remote viewing, control and data logging of the ROV gauge. The software can generate survey reports in PDF or export to a CSV file. Designed for Windows® 7 and above.



### Topside Repeater Remote Display Unit

The Cygnus Topside Repeater is a remote display unit connected to the gauge with an umbilical cable. It displays the thickness measurements at the surface in real-time during the survey.

### Topside Repeater with Video Overlay

The Topside Repeater can also overlay the real-time thickness measurements on to a composite video signal, displaying it on the survey monitor screen. It will also then be recorded (if there is a video of the survey), showing exact locations and the thickness measurement for future reference.

Call our team today on +44 (0) 1305 265 533 for expert product advice

## CYGNUS ROV MOUNTABLE SPECIFICATION

Feature	Description
Materials	Velocities between 2000 m/s and 7000 m/s (0.0800 and 0.2780 in/microsec)
Measurement Range in Steel	1 mm - 250 mm (0.040" - 10.000") depending on selected probe and configuration, material and temperature
Accuracy	±0.1 mm (±0.004") or 0.1% of thickness measurement, whichever is greatest, when calibrated in accordance with Cygnus Instruments calibration procedure
Resolution	0.1 mm or 0.05 mm (selectable) (0.005" or 0.002")
Probe Options	Single crystal probes
Power	7.0 - 30 V DC @ 150 mA (max)
Size	127mm long x 90mm diameter (5 in x 3.5 in)
Weight in Air	900g (2 lb)
Operating Temp.	-10°C to +50°C (14°F to 122°F)
Testing	Depth rated to 500 meters (1,640 ft)
Communication	RS-422, Simplex Single Pair or RS-232 TXD 2400 or 9600 Baud (selectable via DIP switches)
Standards	Designed for EN 15317
Compliance	CE, UKCA, RoHS
Warranty	3 years on gauge and 6 months on probe



# Russell Fraser Sales Pty Ltd

Unit 10 / 1-11 Burns Road, Heathcote NSW 2233 Australia

Ph: +61 2 9545 4433 Email: [rfs@rfsales.com.au](mailto:rfs@rfsales.com.au) Website: [rfsales.com.au](http://rfsales.com.au)



Cygnus Instruments Ltd.  
Cygnus House  
30 Prince of Wales Road  
Dorchester  
Dorset DT1 1PW  
United Kingdom



### Cygnus Headquarters

Call +44 (0) 1305 265 533  
Email [sales@cygnus-instruments.com](mailto:sales@cygnus-instruments.com)  
Visit [cygnus-instruments.com](http://cygnus-instruments.com)

### Cygnus UAE

Call +971 50 3459305  
Email [ribu@cygnus-instruments.com](mailto:ribu@cygnus-instruments.com)  
Visit [cygnus-instruments.com](http://cygnus-instruments.com)

### Cygnus USA

Call +13462230415  
Email [sales@cygnus-instruments.com](mailto:sales@cygnus-instruments.com)  
Visit [us.cygnus-instruments.com](http://us.cygnus-instruments.com)

### Cygnus Singapore

Call +65 6252 5909  
Email [sales@cygnus-instruments.sg](mailto:sales@cygnus-instruments.sg)  
Visit [cygnus-instruments.com/sg/](http://cygnus-instruments.com/sg/)

ISS7 03/21

All information provided is subject to change without prior notice.