

Introducing the

SPECTROLINE®

On-Trak™ NDT Inspection System

(U.S. and foreign patents pending)

The **ONT-365 On-Trak™** is an innovative, track light-style modular NDT inspection system. It features four broad-beam lamps, each of which utilizes three powerful, ultra-high-flux UV-A (365 nm) LEDs for inspection plus one white light LED for general illumination. This overhead lighting system allows inspectors to customize lamp beam patterns to suit their individual needs, as well as add lamp head assemblies as desired to increase the coverage area. Perfect for NDT inspection booths, pre-inspections and screening applications requiring maximum uniformity of coverage over large areas.



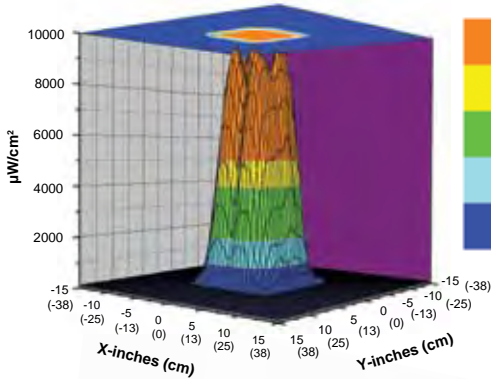
Features:

- ✓ Cool-running, energy-efficient LEDs with 30,000-hour service life
- ✓ Broad-beam profiles provide wide coverage area
- ✓ Electronic Intensity Stabilizers ensure consistent LED performance
- ✓ Instant-on operation; lamps reach full intensity immediately
- ✓ Built-in fans keep LEDs cool to maintain optimum UV-A intensity during extended use
- ✓ Produces less than 2 foot-candles of visible light
- ✓ Filter protectors with rubber bumpers and Borofloat® glass lenses prevent damage to LEDs
- ✓ Easily customizable! Move, adjust and add lamp heads onto track sections according to your specific inspection requirements (additional lamp heads sold separately)
- ✓ Optional remote control with three-position rocker switch provides added convenience and versatility
- ✓ Comes complete with UVS-30 UV-absorbing spectacles

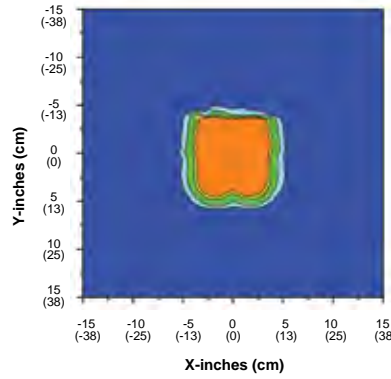
On-Trak™

NDT Inspection System (U.S. and foreign patents pending)

The **ONT-365 On-Trak™ NDT inspection system** is a customizable, track light-style modular system attached to a mountable platform. It features four broad-beam LED lamp assemblies, each with three ultra-high intensity UV-A (365 nm) LEDs and one white light LED. Provides UV-A flood coverage that is ideal for a variety of NDT applications.



Surface Contour Profile at 15 in (38 cm)



Top Intensity Profile at 15 in (38 cm)

SPECIFICATIONS

Product Number:
ONT-365

Light Sources:
3 UV-A LEDs and 1 white light LED
per lamp head

Lamp head diameter:
3.25 in (8.3 cm)

Platform dimensions: (L x W x H)
28.5 x 18.3 x 2.5 in (72 x 46 x 6 cm)

Platform weight: 13 lb (5.9 kg)

Power supply cord: 8 ft (2.4 m)

Power supply:
Input: 100-240 VAC 50/60 Hz
Output: 12 VDC

**Nominal steady-state UV-A
(365 nm) intensity:**
15 in (38 cm) — 9,000 $\mu\text{W}/\text{cm}^2$
24 in (61 cm) — 5,000 $\mu\text{W}/\text{cm}^2$
36 in (91 cm) — 4,000 $\mu\text{W}/\text{cm}^2$

NOTE: UV-A intensity readings
taken with a Spectroline® AccuMAX™
Series meter



Optional remote control with
three-position rocker switch
adds convenience and versatility

REPLACEMENT PARTS

LA-365	UV-A/white light LED lamp head assembly	PS-100	AC power supply
PT-200	Platform and tracks	RC-200	AC remote control
UL-100	UV-A lens	UVS-30	Spectacles, UV-absorbing
FP-100	Filter protector with rubber bumper and Borofloat® glass lens	UVG-50	Goggles, UV-absorbing
AF-200	Air filter (package of 24)	UVF-80	Face shield, UV-absorbing

RFS

Russell Fraser Sales Pty Ltd

Unit 7/38 Waratah St
Kirrawee NSW 2232

Ph: (02) 9545 4433
Fax: (02) 9545 4218

e-mail rfs@rfsales.com.au
web: www.rfsales.com.au

ABN: 79 074 258 549