

SPECTROLINE®

TRITAN™ 365 Series

(Patent Pending)

**Powerful, Multi-LED,
Broad-Beam UV-A
NDT Inspection
Lamps!**

TRITAN™ 365 Series NDT lamps feature three ultra-hi-flux UV-A LEDs for inspection, plus a convenient white light LED to illuminate dark work areas. Their broad-beam configuration provides an extremely wide coverage area, while a compact head design allows access into areas inaccessible to larger UV inspection lamps.

Available in three models to meet your specific NDT inspection requirements: high-intensity, standard-intensity and standard-intensity with integral black light filters.



Features :

- ▶ Choice of one high-intensity model with a nominal steady-state UV-A intensity of $9,000 \mu\text{W}/\text{cm}^2$ or two standard-intensity models, both with a maximum UV-A intensity of less than $5,000 \mu\text{W}/\text{cm}^2$ at 15 inches (38 cm)
- ▶ Large 4 inch (10 cm) diameter coverage area at 15 inches (38 cm), with a minimum UV-A intensity of $2,000 \mu\text{W}/\text{cm}^2$
- ▶ Low visible light emission – less than 2 foot-candles (22 lux)
- ▶ Grip-mounted, three-way rocker switch (white light/off/UV) for easy control of light sources
- ▶ Built-in fan keeps LEDs cool to maintain optimum light output during extended use
- ▶ Rubber bumper with Borofloat® glass lens protects LEDs from damage
- ▶ Modular construction for easy servicing in the field
- ▶ Choice of heavy-duty 8 foot (2.4 m) or 20 foot (6.1 m) AC power cord. Available in 120V, 230V, 240V and 100V models.
- ▶ Meets ASTM UV-A intensity and wavelength specifications for FPI and MPI
- ▶ *Certificate of compliance* for both output and wavelength measurements is supplied with each lamp
- ▶ UV-absorbing spectacles and soft carrying case included



Also available:

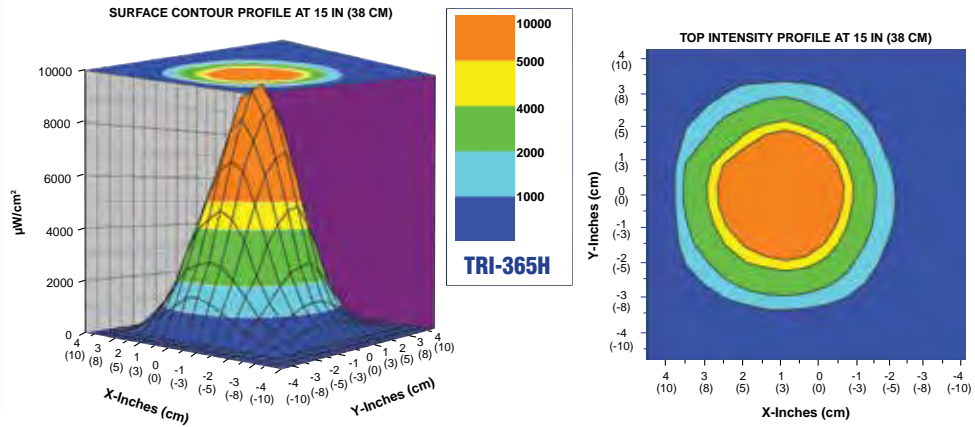
TRITAN™ 365 Series portable, battery-operated AC/DC lamp kits. Include TRITAN™ 365 UV lamp, rechargeable NiMH battery pack, AC and DC cord sets, smart AC charger, UV-absorbing spectacles and soft carrying case.

HIGH-INTENSITY MODEL

The TRITAN™ 365 lamp is available in a high-intensity model specifically designed for NDT inspection applications requiring high UV-A output.

The TRI-365H comes equipped with a clear glass filter and is “tuned” to provide a nominal steady-state UV-A intensity of **9,000 $\mu\text{W}/\text{cm}^2$** at 15 inches (38 cm).

UV-A Beam Profile



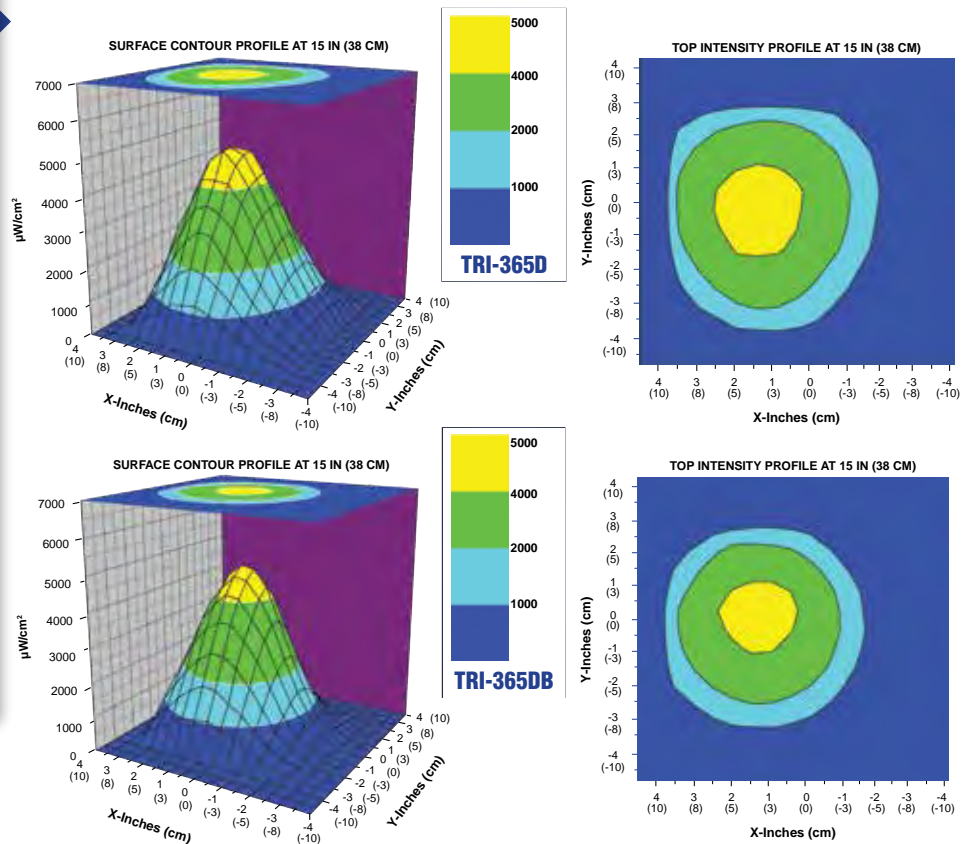
STANDARD-INTENSITY MODELS

The TRITAN™ 365 lamp is also available in two standard-intensity models that are designed for inspection applications requiring limited UV-A output.

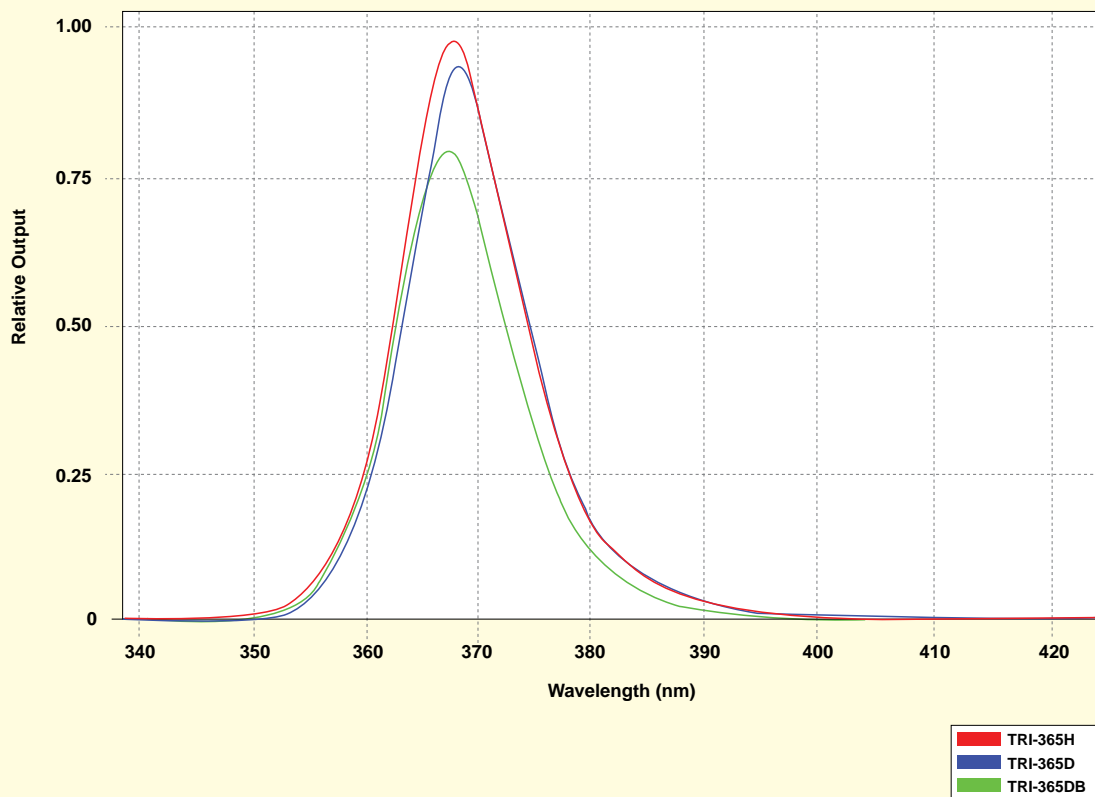
The TRI-365D is fitted with a clear glass filter. The TRI-365DB is equipped with a faceplate with integral black light filters that cover each of the LEDs and reduce the output of wavelengths longer than 400 nm.

Both versions are “tuned” to ensure that they provide a maximum steady-state UV-A intensity of **less than 5,000 $\mu\text{W}/\text{cm}^2$** at 15 inches (38 cm). This addresses aerospace industry concerns.

UV-A Beam Profile

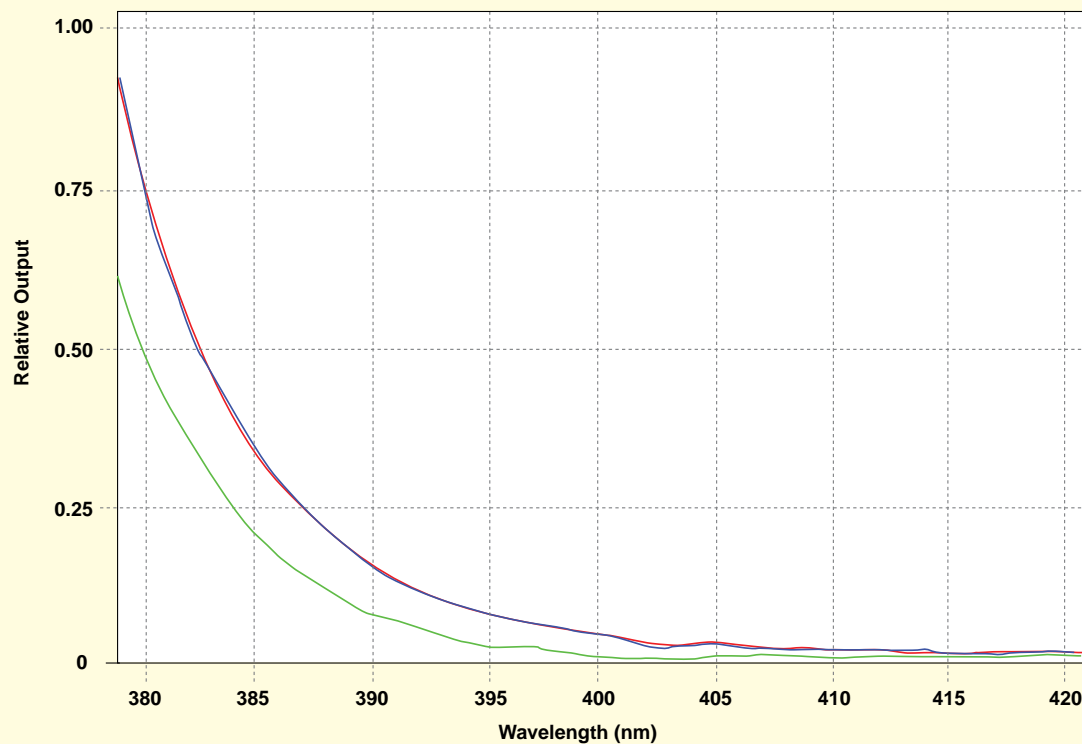


NORMALIZED UV IRRADIANCE



Typical wavelength output profile of TRITAN™ 365 Series with and without integral black light filters.

WAVELENGTHS WITH AND WITHOUT BLACK LIGHT FILTERS



As the wavelength of the TRITAN™ 365 moves into the visible light range, the black light filters significantly reduce the output of the lamp at 400 nm.

SPECIFICATIONS

Model	Nominal steady-state UV-A (365 nm) intensity at 15 inches (38 cm) ①	Visible light measurement	Diameter of UV-A coverage area at 15 inches (38 cm)
TRI-365H High intensity, with clear filter	9,000 $\mu\text{W}/\text{cm}^2$	< 2 foot-candles (22 lux)	4 inch (10 cm)
TRI-365D Standard intensity, with clear filter	< 5,000 $\mu\text{W}/\text{cm}^2$ maximum ②	< 2 foot-candles (22 lux)	4 inch (10 cm)
TRI-365DB Standard intensity, with integral black light filters	< 5,000 $\mu\text{W}/\text{cm}^2$ maximum ②	< 2 foot-candles (22 lux)	4 inch (10 cm)



TRITAN™ 365 faceplate with (top) and without (below) integral black light filters.



Light Source:	3 UV-A LEDs, 1 White Light LED
Lamp Style:	Pistol grip
Lamp Head Diameter:	3.25 in (8.25 cm)
Length:	8.0 in (20.3 cm)
Weight:	1 lb (454 g)
White Light LED Intensity:	400 foot-candles (4,306 lux)
Power Requirements:	
AC lamp: (TRI-365D, TRI-365DB, TRI-365H)	120VAC*
AC/DC lamp: (TRI-365MD, TRI-365MDB, TRI-365MH)	120VAC*/12VDC
Battery Pack:	
Type:	12V, NiMH (rechargeable)
Run time:	3.5 hours (continuous)
Charge time:	2 hours

* Also available in 230V, 240V and 100V versions.

① All UV-A intensity readings were taken with the Spectroliner® AccuMAX™ Series meter, and are factory set to the values shown

② To address aerospace industry concerns



REPLACEMENT PARTS & ACCESSORIES

127955	Faceplate, clear
128196	Faceplate with integral black light filters
BP-30	Battery pack with 12V rechargeable NiMH battery
BR-150A	Smart AC charger
CC-370A	Soft carrying case
FP-365	Filter protector with Borofloat® glass and rubber bumper
PSA-250A	Power supply adapter with 12V DC cord
UL-100	UV-A lens
UVS-30	UV-absorbing spectacles

RFS

Russell Fraser Sales Pty Ltd

Unit 7/38 Waratah St
Kirrawee NSW 2232

Ph: (02) 9545 4433
Fax: (02) 9545 4218

e-mail rfs@rfsales.com.au
web: www.rfsales.com.au

ABN: 79 074 258 549