

# WATER-GLO® ULTRA SERIES

FLUORESCENT LEAK  
DETECTION DYES

SPECTROLINE®  
LEAK DETECTION

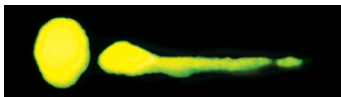
**Fluorescent Leak Detection Dyes For Water and Water/Glycol Fluid-Based Systems. Available in two colors.**

Quickly pinpoint the exact source of all water leaks including tiny, evaporated and condensation-covered leaks.

- Works in both static and circulating systems.
- Can be used as a diagnostic tool for testing seams, welds, seals, fittings and flow-rate measuring.
- Ideal for heat transfer fluid systems.
- Some applications include: boilers, heaters/pumps, sprinkler systems, storage tanks.

Spectrolin® dyes **glow brighter** than the competition.

**ULTRA** Dye Formula



Competitor Dye Formula



**WORKS IN BOTH  
STATIC &  
CIRCULATING  
SYSTEMS**



## Fully Miscible

High Quality, non-particulate and filtered down to 2 microns. Won't change the viscosity or lubricity of host fluid.



## Exclusive Formula

Engineered to meet manufacturers' specifications.



## Improved Stability

More tolerant to extreme temperature range & moisture.



## Independently Tested

For system compatibility & will remain safely within the system.



## Improved Shelf Life

Up to 5 years



**Fluoresces Green**

**SPI-WGG  
UNIVERSAL  
AND MOST  
ECONOMICAL**



**Fluoresces Blue**

**SPI-WGB  
FLUORESCES  
EVEN WHEN DRY  
WON'T CHANGE  
COLOR OF  
HOST FLUID**

**Use as Part of a Diagnostic/Preventive Maintenance Program**



Boilers



Chillers



Dryers/Kilns



Geothermal Heat  
Pump Systems



HVAC  
Systems



Open Baths




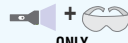

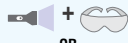

Reactors



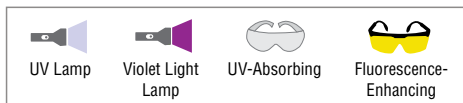
Solar  
Systems

# FIND LEAKS FAST IN WATER OR WATER/GLYCOL-BASED FLUID SYSTEMS.

**JUST ADD A SMALL AMOUNT OF DYE TO THE SYSTEM AND LET IT CIRCULATE. ALL LEAKS WILL GLOW BRIGHTLY WHEN SCANNED WITH A HIGH-INTENSITY SPECTROLINE® LEAK DETECTION LAMP.**

PRODUCT NO./DYE COLOR	APPLICATION	SUGGESTED APPLICATION DILUTION RATIO:	USE WITH
<b>WATER-GLO® ULTRA</b> SPI-WGB-16† SPI-WGB-32†  Blue	<b>WATER AND WATER/GLYCOL-BASED FLUID SYSTEMS</b>	1 pt (473 ml) per 500 gals (1,893 L) water	 ONLY
SPI-WGG-16 SPI-WGG-32 SPI-WG-1G  Green	<b>WATER AND WATER/GLYCOL-BASED FLUID SYSTEMS</b>	1 pt (473 ml) per 1,000 gals (3,785 L) water	 OR 

† Appears clear. Will not discolor host fluid.



The dilution ratios of Spectroline® fluorescent dyes to the host fluids shown above are only guidelines. These ratios can be increased or decreased depending on the fluorescent response required and the ambient lighting conditions. A simple way to check for proper fluorescence is to remove a small amount of host fluid from the system and add the suggested amount of dye to it. Then shine a Spectroline® leak detection lamp on this sample mixture and check for a bright fluorescent response.

## TESTIMONIAL

*"We purchased one of your Industrial (WATER-GLO®) leak detection kits...we found the leak in the coil within 5 minutes, our team could not believe how well the dye showed up....It is now a standard procedure to add (WATER-GLO®) dye to the heating systems of all our tanks and run them for 24 hours to check for leaks prior to delivery."*

– Frank Connelly, RCM Equipment Company LLC.



## IDEAL FOR HEAT TRANSFER FLUID SYSTEM APPLICATIONS



Premium quality dye, engineered to meet manufacturers' specifications.



Note: All WATER-GLO® fluorescent dyes are NSF Certified and registered to meet food-grade processing requirements. WATER-GLO® water-based dyes meet category codes G7, GX and HTX2.

Available in different sizes:



# Russell Fraser Sales Pty Ltd

Unit 7/38 Waratah St  
Kirrawee NSW 2232

Ph: (02) 9545 4433  
Email: rfs@rfsales.com.au

Web: www.rfsales.com.au  
ABN: 79 074 258 549

SCAN QR CODE TO LEARN MORE



INDUSTRIAL  
01/22 A19262-3  
PRINTED IN USA