

# EDGE™ 4

## LED UV-A Overhead Wash Station Lamp

EDG-4W

The **EDGE™ 4** is a flood lamp engineered specifically for wash stations. It provides a very wide area of coverage without a high intensity. The IP65-rated housing allows the lamp to work in wet and dirty environments. Heat sinks keep the lamp cool without the need for a fan, so no dust or water can enter. Four UV-A LEDs provide a wide, uniform beam that is highly consistent and reliable.

**IP65  
RATED**



**Dust-Tight &  
Water Resistant**



**NDT Wash  
Stations**



**Wide  
Coverage Area**

### EASILY MOUNTABLE

For overhead inspection or  
in-line applications

EDG-4W

### FANLESS

Cool running design that uses  
state-of-the-art heat sinks

### FLEXIBLE ARM

For mounting at  
specific angles

**WIDE  
COVERAGE AREA**

**4 UV-A LEDs**  
Provide large area  
of coverage

**WATER  
RESISTANT!**



### UV-A LENSES

Virtually eliminate  
clouding/solarization

**IP65  
RATED**



**CERTIFICATE OF  
LIGHT OUTPUT**  
included with lamp

# EDGE™ 4

## LED UV-A Overhead Wash Station Lamp



**CERTIFICATE OF LIGHT OUTPUT**

	EDG-4W
<b>Nominal Steady-State Intensity</b> $\text{Ⓢ}$ at 48 in (122 cm)	1,400 $\mu\text{W}/\text{cm}^2$
<b>UV-A Coverage Area</b> at 48 in (122 cm) at minimum 200 $\mu\text{W}/\text{cm}^2$	22 x 22 in (56 x 56 cm)
<b>Nominal Steady-State Intensity</b> $\text{Ⓢ}$ at 72 in (183 cm)	670 $\mu\text{W}/\text{cm}^2$
<b>UV-A Coverage Area</b> at 72 in (183 cm) at minimum 200 $\mu\text{W}/\text{cm}^2$	24 x 24 in (61 x 61 cm)
<b>Nominal Steady-State Intensity</b> $\text{Ⓢ}$ at 96 in (244 cm)	380 $\mu\text{W}/\text{cm}^2$
<b>UV-A Coverage Area</b> at 96 in (244 cm) at minimum 200 $\mu\text{W}/\text{cm}^2$	25 x 25 in (63.5 x 63.5 cm)
<b>LED Filter</b>	Protective clear filter

### Technical Features

<b>Light Source:</b>	(4) UV-A LEDs
<b>Lamp Style:</b>	Panel flood lamp
<b>Dimensions (L x W x H):</b>	11 x 14 x 9 in (28 x 36 x 23 cm)
<b>Weight:</b>	14 lb (6.4 kg)
<b>Power Requirements:</b>	AC power (main AC power cord supplied with the unit)*
<b>Cooling System:</b>	Fanless

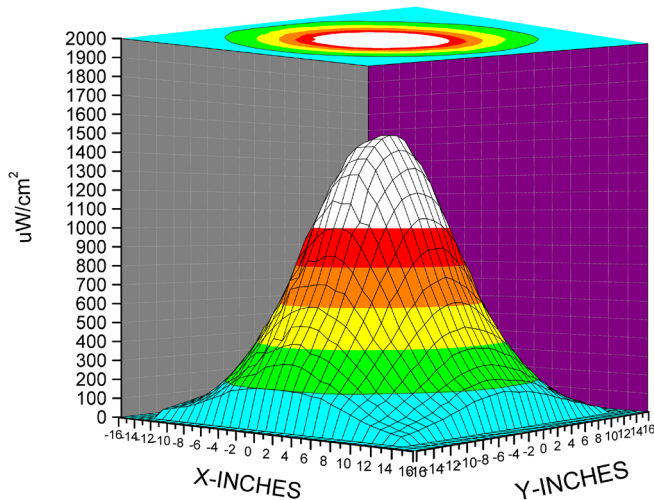
*\*(Also available in 100-120V, 230V and 240V versions)*



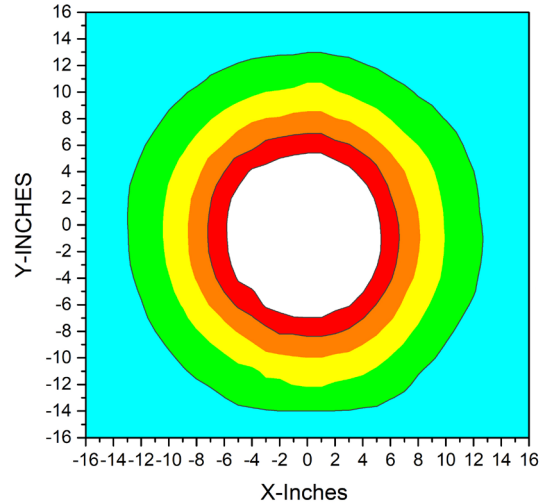
$\text{Ⓢ}$  UV-A intensity reading taken with the Spectroline® AccuMAX™ Series meter, and is factory set to the value shown.

### UV-A Beam Profiles

Surface Contour Profile for EDG-4W at 4 Feet (122cm)



Beam Irradiance Profile for EDG-4W at 4 Feet (122cm)



# Russell Fraser Sales Pty Ltd

Unit 7/38 Waratah St  
 Kirrawee NSW 2232

Ph: (02) 9545 4433  
 Fax: (02) 9545 4218

Email: rfs@rfsales.com.au  
 Web: www.rfsales.com.au

ABN: 79 074 258 549