

SPECIFICATIONS

X1000 PLUS SYSTEM

Features	Description
LCD	7"LCD ( 800 x 480 )
Snapshot	640 * 480, jpeg
Recording	640 * 480 , MPEG4 (with audio)
Dimensions	240 * 154 * 47mm
System weight	1.3kg (2.86 lb)
Dust & Water proof	IP57
Drop resistance	1m
Battery	Rechargeable Li-Battery
Working temperature	0~60 °C
Storage temperature	0~60 °C
Charging temperature	10~60 °C
Relative humidity	Max 95% , non condensing
USB	Mass storage mode / Webcam mode
Storage	SD card, up to 32G
AV output	NTSC / PAL
Audio input	Built-in microphone
Brightness Adjust	8 levels (5+3 Boost levels)

360 ARTICULATION TUBE

Features	Description
Probing head diameter	6.0mm
Tube length	2m/ 3m
Articulation	Full ways, ≥110°
LED	Front / Side
Button	Snapshot / LED + / LED -



PRM100 PIPE INSPECTION CAMERA

Features	Description
Probing head diameter	10.0mm (w/o mirror) 10.5mm (w/ side view mirror)
Tube length	15m
Articulation	0
LED	Front / Side
Buttons (on meter)	Power m/ft switch LED backlight



ACCESSORIES



Also include: Usb cable, AV cable, clean set, SD card, user manual, installation driver

X1000 Videoscope system PLUS

OPERATIONS ON THE FINGERTIPS



R

F

S

NDT

Russell Fraser Sales

Pty Ltd

Unit 10 / 1-11 Burns Road, Heathcote NSW 2233 Australia

Ph: +61 2 9545 4433 Email: rfs@rfsales.com.au Website: rfsales.com.au



Mitcorp  
INSPECTION REDEFINED





## CLEARNESS



## SHARPNESS



## BRIGHTNESS



Our outstanding image processing technology implementation to sharpen the edges and optimize the image quality for best inspection result

8 levels of light adjustments to different inspection conditions, the 5 basic levels works for most inspections; 3 advanced levels will expand the exposure time for extremely dark environment

### BOOST+

Ideals of extremely dark environment inspections



### COMPARE

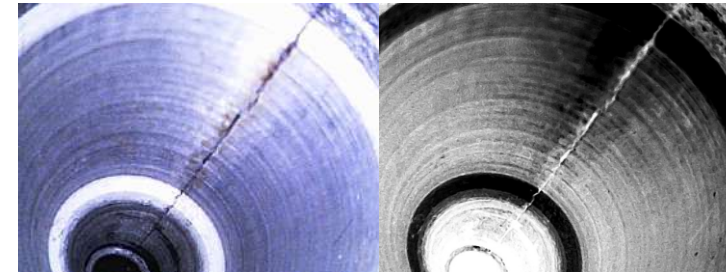
The side- by-side comparison of a still image with the live view allows user to verify the difference of an area at different times



\*You can adjust the stored image frame during your inspection on the screen

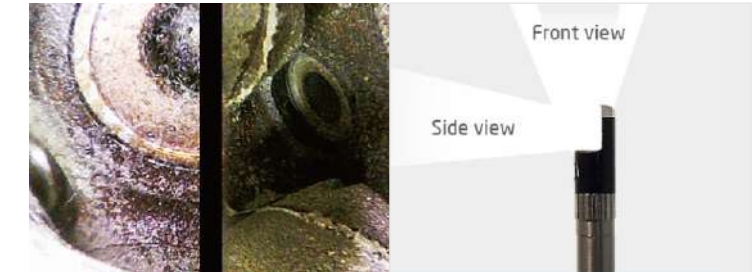
### NEGATIVE+

Contrast enhancement to stand out cracks and details



### DUAL VIEWS IN DIVIDED SCREENS

To see front view and side view simultaneously (designated lens is need )



### WHITE BALANCE ADJUSTMENT

You can adjust white balance via operation interface



Default

Warm

### hyperion®



PARTICLE FREE - To eliminate the dust on the screen without cleaning the mirror.



w/o Particle free

Particle free

### SKYPE READY

Simply connect to internet, you can Skype out to communicate with another PC anywhere



### ADD NOTE

To put comparison information or comments on the captured image



## KEY FEATURES

- Capacitive touch technology for best performance and durability
- 7" TFT LCD
- 1m drop resistance
- Sharp, clear, bright images
- 800x480 display resolution
- 640x480 video/photo resolution
- Rechargeable Li-battery
- Skype communication ready
- LED backlight function keys: ideal for dark environment operation
- USB camera: Support webcam device to remote access for data sharing and real-time diagnose
- USB reader: Simply connect to your PC to retrieve your data from the SD card, card reader is not necessary
- Neck/Hand strap: convenience and great for operation
- Light weight: only 1.3kg



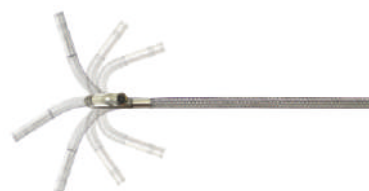
Touch screen operation



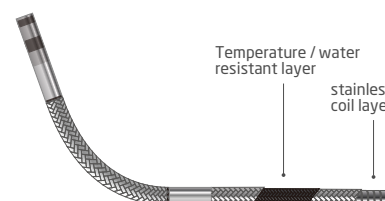
Can be operated under direct sunshine



- Fast and easy joystick operation - provide snapshot / light+ (boost) / light- functions on the controller
- IP55 protection



- 360° articulation
- Provide flexibilities in narrow space inspection



- High density stainless steel braided tube provide durability, flexibility and also rusty, water and temperature resistant