

MEETS STANDARDS FOR



EN ISO:3059

SPECTROLINE®
NDT

Vintage™ 365

CLASSIC DESIGN
MODERN TECHNOLOGY
ECONOMIC PRICE



Handheld LED UV-A Inspection Lamp

SPN-VIN365



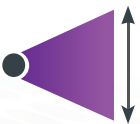
VINTAGE ERGONOMIC DESIGN

Classic design with modern LED technology



COST EFFECTIVE

Quality lamp at economic price



WIDE BEAM PROFILE

Light output equivalent to classic HID lamps



FANLESS DESIGN

Cool running and efficient

Vintage™
365

CONTROL SWITCH

Grip-mounted, rocker switch

2 LONG-LASTING LEDS PROTECTED BY LENSES

Wide coverage, reduced rate of solarization

CLASSIC PISTOL GRIP

Comfortable, balanced control

MODEL	NOMINAL STEADY-STATE UV-A (365 nm) INTENSITY at 15 in (38 cm) ①	VISIBLE LIGHT MEASUREMENT at 15 in (38 cm)	UV-A COVERAGE AREA (at minimum 1,200 $\mu\text{W}/\text{cm}^2$) at 15 in (38 cm)
SPN-VIN365	5,500 $\mu\text{W}/\text{cm}^2$	< 1 foot-candle (< 11 lux)	6 in (15.2 cm)

Light Source:	2 UV-A (365 nm) LEDs
Lamp Style:	Pistol Grip
Length: (L x W x H)	7.1 x 5.0 x 9.5 in (18 x 12.7 x 24.1 cm)
Weight:	2.1 lbs (0.95 kg)
Power Requirements:	AC power (main AC power cord supplied with the unit) (Available in 100-120V, and 220-240V versions)

① UV-A intensity reading taken with the Spectroline® AccuMAX™ Series meter, and are factory set to the values shown.

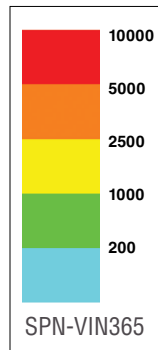
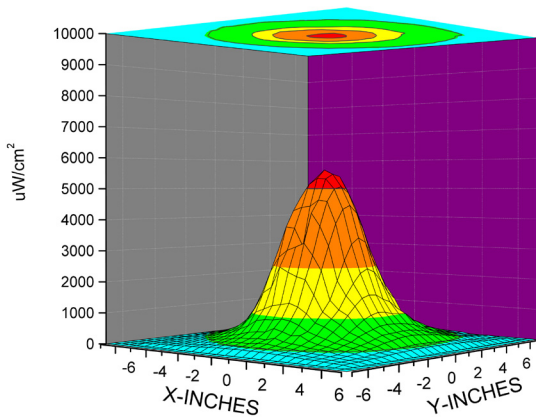


CERTIFICATE OF LIGHT OUTPUT
included with lamp

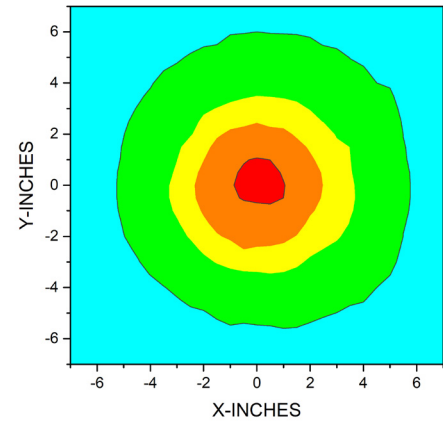


UV-A Beam Profiles

Surface Contour Profile at 15 in (38 cm)



Top Intensity Profile at 15 in (38 cm)



CLASSIC DESIGN
MODERN TECHNOLOGY
ECONOMIC PRICE

DISTRIBUTED BY:



Russell Fraser Sales Pty Ltd

Unit 10 / 1-11 Burns Road, Heathcote NSW 2233 Australia

Ph: +61 2 9545 4433 Email: rfs@rfsales.com.au Website: rfsales.com.au