

PRM2830 Pipe Inspection Solution



● IP54 water & dust proof ●



Rugged IPX7 level waterproof Super bright LED on camera.



Compact portable design.



Vertical / Horizontal usage hinge

PROFESSIONAL IMAGE QUALITY



SUPER-WIDE VIEW CAMERA LENS

150° camera lens provides maximum inspection area.

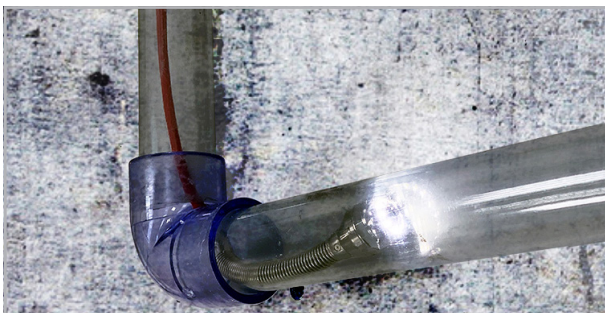
High-Definition image output

Capture & record super clear, crisp images.

Digital meter on screen

Display the distance of probe inserted into the inspection.

ACCESSORY-CENTERING DEVICES

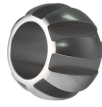


30 m flexible cable can pass 90 degree conner.



50 mm metal ring designed for 2 inch pipeline insertion.

ACCESSORIES



Ø50mm metal ring



Ø100mm brush



Ø150mm brush



Aluminum carry case



DC Adaptor



USB cable



HDMI cable



micro SD card

SPECIFICATIONS

Monitor

Model	V8 / X600
Dimension	161.93 (mm) x 127.93 (mm) x 46 (mm)
Weight	705g
Display	5" Touchscreen 800x480 pixels
Power supply	Rechargeable Li-battery
Video output	Micro HDMI
Working time	Approximately 3.5 hours of operation
Charging time	Approximately 2.5 hours
Data transfer/ Charging	USB-C
DC Power adapter	Input:100-240V~0.5A ; Output: 5V/3A(15W)
Phone Jack	Built-in microphone
Storage	Micro SD up to 64GB
Image Format	JPEG, 1920x1080
Video Format	MP4, 1920x1080
IP Rating	IP54
Drop resistance	1 meter
Operating temp.	-10°C~50°C
Storage temp.	Generally storage under 60°C
Charging temp.	0°C~40°C

Probe

Model	2830HD-F-30M-FRP
Diameter	28.0mm
Length	30m
Direct of view	Front view
Illumination	Front LEDs
FOV(Field of View)	150°
DOF(Depth of Field)	10mm~∞
Articulation	N/A
Buttons	N/A
Material	FRP
Liquid resistance	Unleaded gasoline, diesel, machine oil, brake oil, transmission oil, water
IP Rating	Under water 20m for 30 minutes water proof
Working temp.	-10°C~60°C
Storage temp	Generally storage under 60°C
Relative humidity	Max 95% non-condensing



Russell Fraser Sales Pty Ltd

Unit 10 / 1-11 Burns Road, Heathcote NSW 2233

(02) 9545 4433 rfs@rfsales.com.au www.rfsales.com.au